

## MCAS EXHIBITION PROGRAM FAQs

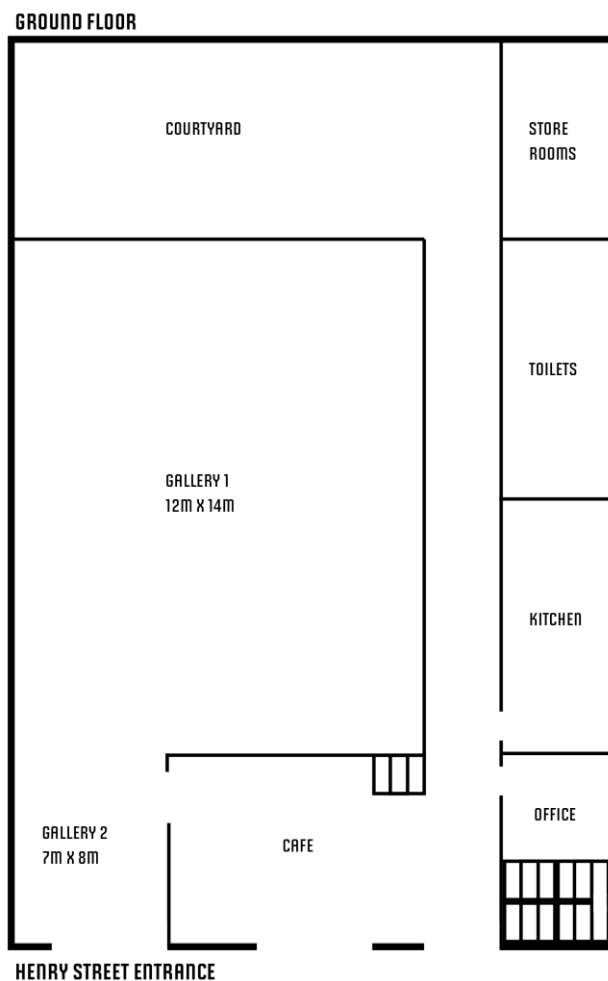
**When do applications open for MCAS 2023?**  
Monday 6 June 2022

**When do applications close for MCAS 2023?**  
Midnight AWST Sunday 31 July 2022

**When will I know if my application has been successful?**  
By the end of August 2022

**How much will it cost to hire the gallery for my exhibition if I am successful?**  
The cost is \$800 per week ex GST for a minimum two-week period. This includes one install day, 16 days of exhibition and one de-install day.

**What spaces are available?**  
MCAS only offers the ground floor gallery spaces to artists to exhibit in. There is no access to the upper floor spaces for hirers.



### **Can I put in an application with another artist?**

Yes. We are very supportive of applications from multiple artists or a collective for a group show.

### **Is there anything I should know about the building before I apply?**

The Moores Building is a Heritage building. Consequently, no drilling/affixing into the walls, floors or rafters is permitted while installing artworks. No labels or interpretation can be affixed to the walls. No sticky labels or blu-tac may be used as they can remove the limewash on the walls.

We suggest that a room sheet is developed for your exhibition to detail the artworks, prices etc. It is your responsibility to design and print this resource for your exhibition.

MCAS seeks to program additional events during exhibition periods to contribute to a vibrant creative hub. This could be a private function delivered by the Moore & Moore café, an intimate music or spoken word performance or other. These additional activities can be great ways to showcase or share your work with a broader audience and can often lead to sales.

If you are successful in your application, we will check with you to ensure what you are comfortable with taking place while your work is being exhibited.

### **WHAT IS INCLUDED IN THE HIRING FEE?**

#### **Installation support**

FAC will provide an induction to the space and equipment. FAC will arrange an install technician to support on the first day of install from 9am – 5pm.

The install technician can assist with:

- the provision of materials and equipment
- hanging of some tricky items where you might want to hang from existing fixtures in the ceiling
- ensuring the Heritage Building requirements are adhered to
- ensuring display furniture is available
- ensuring the space is clean and painted ready for you to use

It is the artist's responsibility to lead and arrange install crew to support the install of the exhibition.

#### **De-installation support**

FAC will provide an install technician for de-install day (9am-1pm). As with the install, the technician will be there to support your team with the deinstall and to ensure upkeep of the space for the next exhibition.

### **Installation equipment**

We provide install equipment and materials include hanging wires, hooks, ladders, various plinths (some with acrylic hoods) and lighting.

It is the artist's responsibility to supply all artworks and all hanging attachments for the artwork.

There is no storage available onsite for MCAS hirers.

### **Marketing**

Your exhibition will be listed in Fremantle Arts Centre's quarterly guide and on the FAC website. There are 2 x A-Frame signs that you may use for street promotion of your exhibition.

Artists are responsible for the creation and distribution of their own specific marketing materials including posters, flyers, invitations, and a-Frame signage. Our team can certainly introduce you to excellent individuals to help with this if you require it.

### **Does MCAS staff my exhibition?**

No. The artist(s) are responsible for the invigilation of their work for the duration of the exhibition. The space cannot be left unattended if it is open to the general public.

MCAS is open 10am – 3pm, 7 days a week. Access to the galleries is via Moore & Moore Café who will lock and unlock the main entrance each day.

Hirers are responsible for opening, closing and supervising the gallery spaces only.

### **If I want to hold an opening night function what do I need to do?**

Openings for MCAS shows are typically held on the first Friday night of the exhibition period.

The organisation and all costs associated with an opening function are that of the hirer including catering and serving requirements, security and staffing, and promotion. MCAS can provide the use of trestle tables, a microphone and the Gallery's speaker system for the evening.

There is no existing liquor licence at MCAS and it is the responsibility of the hirer to research and make their own arrangements depending on requirements of the event. Guiding information can be found [here](#).

The Moore & Moore Café team are very friendly, helpful and incredibly supportive of the MCAS program and artists. We encourage you to approach them in the first instance should you require catering, drinks service etc.